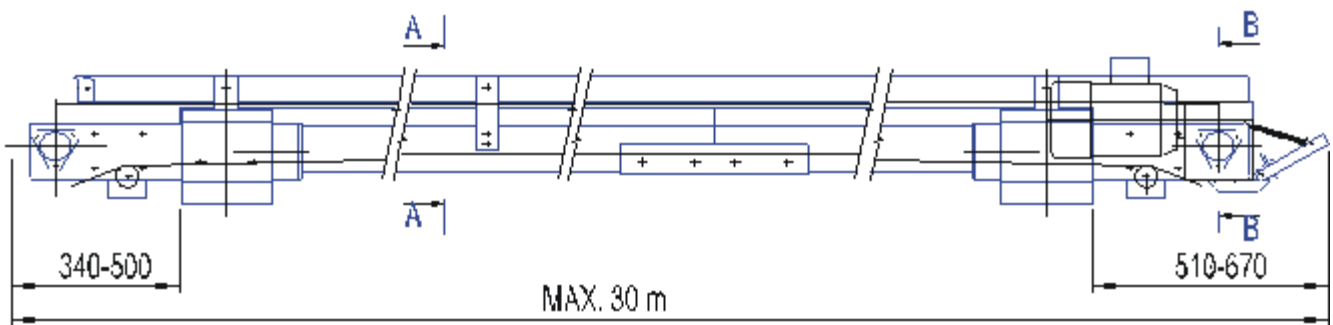


# LOOSE MATERIAL BELT CONVEYER



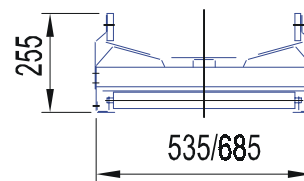
Dung belt conveyers (loose material conveyers) are of a modular design, which enables assembling of practically any conveyer length. The upper half of the conveyer belt moves inside a metal trough. The bottom half is guided inside the conveyer frame on supporting rolls. The belt drive is secured in place through driving and tensioning heads that are mounted in sliding fittings attached to the conveyer frame. The conveyers of greater lengths have both the heads of driving design. Bolts provide tensioning. For the conveyers with two driving heads the belt may be switched into reverse motion, as well.

## Technical parameters

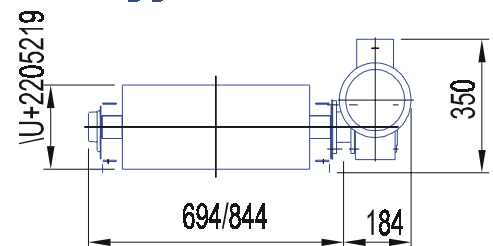


Belt width	500 mm	650 mm
Conveyer capacity	40 t/h	50 t/h
Belt speed	1,1 m/s	
Conveyer dip	max. 25°	
Electric motor power input	1,1 - 2,2 kW	

A-A



B-B



e-mail: [obchod@mbd-tech.com](mailto:obchod@mbd-tech.com)  
<http://www.mbd-tech.com>

**MBD NITRA s.r.o.**  
 Chrenovská 14  
 949 01 NITRA  
 SLOVAKIA  
 Tel.: +421-37-6536505  
 Fax: +421-37-6536182

**VIBOX a.s.**  
 Jasenná 305  
 763 12 VIZOVICE  
 CZECH REPUBLIC  
 TEL.:+420-57-7456 132  
 FAX:+420-57-7456 138

**Centrokoka-MBD**  
 Cane Babović 11  
 12000 Požarevac  
 Yugoslavia  
 Tel.: +381 638 349 555  
 Fax: +381 122 100 267